



測試報告

Test Report

號碼(No.) : KA/2011/A2083 日期(Date) : 2011/11/04 頁數(Page) : 1 of 8

長春人造樹脂廠股份有限公司

CHANG CHUN PLASTICS CO., LTD.

高雄市大寮區大發工業區華西路8號

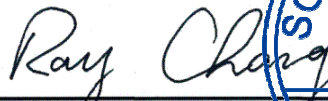
NO.8, HUASI RD., DALIAO DIST., KAOSIUNG CITY 831, TAIWAN(R.O.C.)

以下測試樣品係由客戶送樣，且由客戶聲稱並經客戶確認如下

(The following samples was/were submitted and identified by/on behalf of the client as) :

樣品名稱(Sample Description)	:	瞬間接著劑 (CYANOACRYLATE ADHESIVE)
樣品型號(Style/Item No.)	:	CA152/CA152F/CA152S/CA153/CA155/CA160/CA170/CA260/CA270/ CA310/CA310F/CA320/CA320F/CA320W/CA330/CA350/CA351/CA351F/CA353
收件日期(Sample Receiving Date)	:	2011/10/31
測試期間(Testing Period)	:	2011/10/31 TO 2011/11/04
送樣廠商(Sample Submitted By)	:	長春人造樹脂廠股份有限公司 (CHANG CHUN PLASTICS CO., LTD.)

測試結果(Test Results) : 請見下一頁 (Please refer to next pages).


Ray Chang / Asst. Manager
Signed for and on behalf of
SGS Taiwan Limited



Unless otherwise stated the results shown in this test report refer only to the sample(s) tested. This test report cannot be reproduced, except in full, without prior written permission of the Company. 除非另有說明，此報告結果僅對測試之樣品負責。本報告未經本公司書面許可，不可部分複製。
This document is issued by the Company subject to its General Conditions of Service printed overleaf, available on request or accessible at www.sgs.com/terms_and_conditions.htm and, for electronic format documents, subject to Terms and Conditions for Electronic Documents at www.sgs.com/terms_e-document.htm. Attention is drawn to the limitation of liability, indemnification and jurisdiction issues defined therein. Any holder of this document is advised that information contained hereon reflects the Company's findings at the time of its intervention only and within the limits of Client's instructions, if any. The Company's sole responsibility is to its Client and this document does not exonerate parties to a transaction from exercising all their rights and obligations under the transaction documents. This document cannot be reproduced except in full, without prior written approval of the Company. Any unauthorized alteration, forgery or falsification of the content or appearance of this document is unlawful and offenders may be prosecuted to the fullest extent of the law.

台灣檢驗科技股份有限公司

SGS Taiwan Ltd.
No. 61, Kai-Fa Road, Nanzih Export Processing Zone, Kaohsiung, Taiwan /
t + 886 (07)301 2121

f + 886 (07)3010867

高雄市楠梓加工出口區開發路61號
www.tw.sgs.com

Member of the SGS Group



測試報告

Test Report

號碼(No.) : KA/2011/A2083 日期(Date) : 2011/11/04 頁數(Page) : 2 of 8

長春人造樹脂股份有限公司

CHANG CHUN PLASTICS CO., LTD.

高雄市大寮區大發工業區華西路8號

NO.8, HUASI RD., DALIAO DIST., KAOSIUNG CITY 831, TAIWAN(R.O.C.)

測試結果(Test Results)

測試部位(PART NAME) NO.1 : 透明 瞬間接著劑 (TRANSPARENT CYANOACRYLATE ADHESIVE)

測試項目 (Test Items)	單位 (Unit)	測試方法 (Method)	方法偵測 極限值 (MDL)	結果 (Result) NO.1
鎘 / Cadmium (Cd)	mg/kg	參考IEC 62321: 2008方法, 用感應耦合電漿 原子發射光譜儀檢測. / With reference to IEC 62321: 2008 and performed by ICP- AES.	2	n.d.
鉛 / Lead (Pb)	mg/kg	參考IEC 62321: 2008方法, 用感應耦合電漿 原子發射光譜儀檢測. / With reference to IEC 62321: 2008 and performed by ICP- AES.	2	n.d.
汞 / Mercury (Hg)	mg/kg	參考IEC 62321: 2008方法, 用感應耦合電漿 原子發射光譜儀檢測. / With reference to IEC 62321: 2008 and performed by ICP- AES.	2	n.d.
六價鉻 / Hexavalent Chromium Cr(VI) by alkaline extraction	mg/kg	參考IEC 62321: 2008方法, 用UV-VIS檢測. / With reference to IEC 62321: 2008 and performed by UV-VIS.	2	n.d.
多溴聯苯總和 / Sum of PBBs	mg/kg	參考IEC 62321: 2008方法, 以氣相層析儀/質 譜儀檢測. / With reference to IEC 62321: 2008 and performed by GC/MS.	-	n.d.
一溴聯苯 / Monobromobiphenyl			5	n.d.
二溴聯苯 / Dibromobiphenyl			5	n.d.
三溴聯苯 / Tribromobiphenyl			5	n.d.
四溴聯苯 / Tetrabromobiphenyl			5	n.d.
五溴聯苯 / Pentabromobiphenyl			5	n.d.
六溴聯苯 / Hexabromobiphenyl			5	n.d.
七溴聯苯 / Heptabromobiphenyl			5	n.d.
八溴聯苯 / Octabromobiphenyl			5	n.d.
九溴聯苯 / Nonabromobiphenyl			5	n.d.
十溴聯苯 / Decabromobiphenyl			5	n.d.

Unless otherwise stated the results shown in this test report refer only to the sample(s) tested. This test report cannot be reproduced, except in full, without prior written permission of the Company. 除非另有說明, 此報告結果僅對測試之樣品負責。本報告未經本公司書面許可, 不可部分複製。
This document is issued by the Company subject to its General Conditions of Service printed overleaf, available on request or accessible at www.sgs.com/terms_and_conditions.htm and, for electronic format documents, subject to Terms and Conditions for Electronic Documents at www.sgs.com/terms_e-document.htm. Attention is drawn to the limitation of liability, indemnification and jurisdiction issues defined therein. Any holder of this document is advised that information contained hereon reflects the Company's findings at the time of its intervention only and within the limits of Client's instructions, if any. The Company's sole responsibility is to its Client and this document does not exonerate parties to a transaction from exercising all their rights and obligations under the transaction documents. This document cannot be reproduced except in full, without prior written approval of the Company. Any unauthorized alteration, forgery or falsification of the content or appearance of this document is unlawful and offenders may be prosecuted to the fullest extent of the law.

台灣檢驗科技股份有限公司

SGS Taiwan Ltd.
No. 61, Kai-Fa Road, Nanzih Export Processing Zone, Kaohsiung, Taiwan /
t + 886 (07)301 2121 f + 886 (07)3010867

高雄市楠梓加工出口區開發路61號
www.tw.sgs.com

Member of the SGS Group

長春人造樹脂股份有限公司

CHANG CHUN PLASTICS CO., LTD.

高雄市大寮區大發工業區華西路8號

NO.8, HUASI RD., DALIAO DIST., KAOSIUNG CITY 831, TAIWAN(R.O.C.)

測試項目 (Test Items)	單位 (Unit)	測試方法 (Method)	方法偵測 極限值 (MDL)	結果 (Result) NO.1
多溴聯苯醚總和 / Sum of PBDEs	mg/kg	參考 IEC 62321: 2008 方法, 以氣相層析儀/質譜儀檢測. / With reference to IEC 62321: 2008 and performed by GC/MS.	-	n.d.
一溴聯苯醚 / Monobromodiphenyl ether			5	n.d.
二溴聯苯醚 / Dibromodiphenyl ether			5	n.d.
三溴聯苯醚 / Tribromodiphenyl ether			5	n.d.
四溴聯苯醚 / Tetrabromodiphenyl ether			5	n.d.
五溴聯苯醚 / Pentabromodiphenyl ether			5	n.d.
六溴聯苯醚 / Hexabromodiphenyl ether			5	n.d.
七溴聯苯醚 / Heptabromodiphenyl ether			5	n.d.
八溴聯苯醚 / Octabromodiphenyl ether			5	n.d.
九溴聯苯醚 / Nonabromodiphenyl ether			5	n.d.
十溴聯苯醚 / Decabromodiphenyl ether			5	n.d.
可塑劑定量分析 / Phthalates				
鄰苯二甲酸甲苯基丁酯 / BBP (Benzyl butyl phthalate) (CAS No.: 85-68-7)	%	本測試參考 EN 14372, 以氣相層析儀/質譜儀檢測之. / With reference to EN 14372. Analysis was performed by GC/MS.	0.003	n.d.
鄰苯二甲酸二丁酯 / DBP (Dibutyl phthalate) (CAS No.: 84-74-2)	%	本測試參考 EN 14372, 以氣相層析儀/質譜儀檢測之. / With reference to EN 14372. Analysis was performed by GC/MS.	0.003	n.d.
鄰苯二甲酸二(2-乙基己基)酯 / DEHP (Di- (2-ethylhexyl) phthalate) (CAS No.: 117-81-7)	%	本測試參考 EN 14372, 以氣相層析儀/質譜儀檢測之. / With reference to EN 14372. Analysis was performed by GC/MS.	0.003	n.d.
鄰苯二甲酸二異癸酯 / DIDP (Di-isodecyl phthalate) (CAS No.: 26761-40-0)	%	本測試參考 EN 14372, 以氣相層析儀/質譜儀檢測之. / With reference to EN 14372. Analysis was performed by GC/MS.	0.01	n.d.
鄰苯二甲酸二異壬酯 / DINP (Di-isononyl phthalate) (CAS No.: 28553-12-0)	%	本測試參考 EN 14372, 以氣相層析儀/質譜儀檢測之. / With reference to EN 14372. Analysis was performed by GC/MS.	0.01	n.d.
鄰苯二甲酸二正辛酯 / DNOP (Di-n-octyl phthalate) (CAS No.: 117-84-0)	%	本測試參考 EN 14372, 以氣相層析儀/質譜儀檢測之. / With reference to EN 14372. Analysis was performed by GC/MS.	0.003	n.d.
鄰苯二甲酸二己酯 / DNHP (Di-n-hexyl phthalate) (CAS No.: 84-75-3)	%	本測試參考 EN 14372, 以氣相層析儀/質譜儀檢測之. / With reference to EN 14372. Analysis was performed by GC/MS.	0.003	n.d.

Unless otherwise stated the results shown in this test report refer only to the sample(s) tested. This test report cannot be reproduced, except in full, without prior written permission of the Company. 除非另有說明, 此報告結果僅對測試之樣品負責。本報告未經本公司書面許可, 不可部分複製。
This document is issued by the Company subject to its General Conditions of Service printed overleaf, available on request or accessible at www.sgs.com/terms_and_conditions.htm and, for electronic format documents, subject to Terms and Conditions for Electronic Documents at www.sgs.com/terms_e-document.htm. Attention is drawn to the limitation of liability, indemnification and jurisdiction issues defined therein. Any holder of this document is advised that information contained hereon reflects the Company's findings at the time of its intervention only and within the limits of Client's instructions, if any. The Company's sole responsibility is to its Client and this document does not exonerate parties to a transaction from exercising all their rights and obligations under the transaction documents. This document cannot be reproduced except in full, without prior written approval of the Company. Any unauthorized alteration, forgery or falsification of the content or appearance of this document is unlawful and offenders may be prosecuted to the fullest extent of the law.

長春人造樹脂廠股份有限公司

CHANG CHUN PLASTICS CO., LTD.

高雄市大寮區大發工業區華西路8號

NO.8, HUASI RD., DALIAO DIST., KAOSIUNG CITY 831, TAIWAN(R.O.C.)

備註(Note) :

1. mg/kg = ppm ; 0.1wt% = 1000ppm
2. n.d. = Not Detected (未檢出)
3. MDL = Method Detection Limit (方法偵測極限值)
4. "-" = Not Regulated (無規格值)

PFOS參考資訊(Reference Information) : 指令 2006/122/EC (Directive 2006/122/EC)

(1) 該物質不可置於市場上或使用於特殊物質或配置成分重量濃度等於或大於0.005%.

(May not be placed on the market or used as a substance or constituent of preparations in a concentration equal to or higher than 0.005 % by mass.)

(2) 該物質不可置於市場上的半成品或商品或其物件；假若零件上明顯地具有PFOS並參照結構上及微細構造上計算PFOS重量濃度等於或大於0.1%，而紡織品或其他覆蓋物質，如果PFOS在覆蓋物質中含量等於或大於 $1\mu\text{g}/\text{m}^2$.

(May not be placed on the market in semi-finished products or articles, or parts thereof, if the concentration of PFOS is equal to or higher than 0.1 % by mass calculated with reference to the mass of structurally or microstructurally distinct parts that contain PFOS or, for textiles or other coated materials, if the amount of PFOS is equal to or higher than $1\mu\text{g}/\text{m}^2$ of the coated material.)

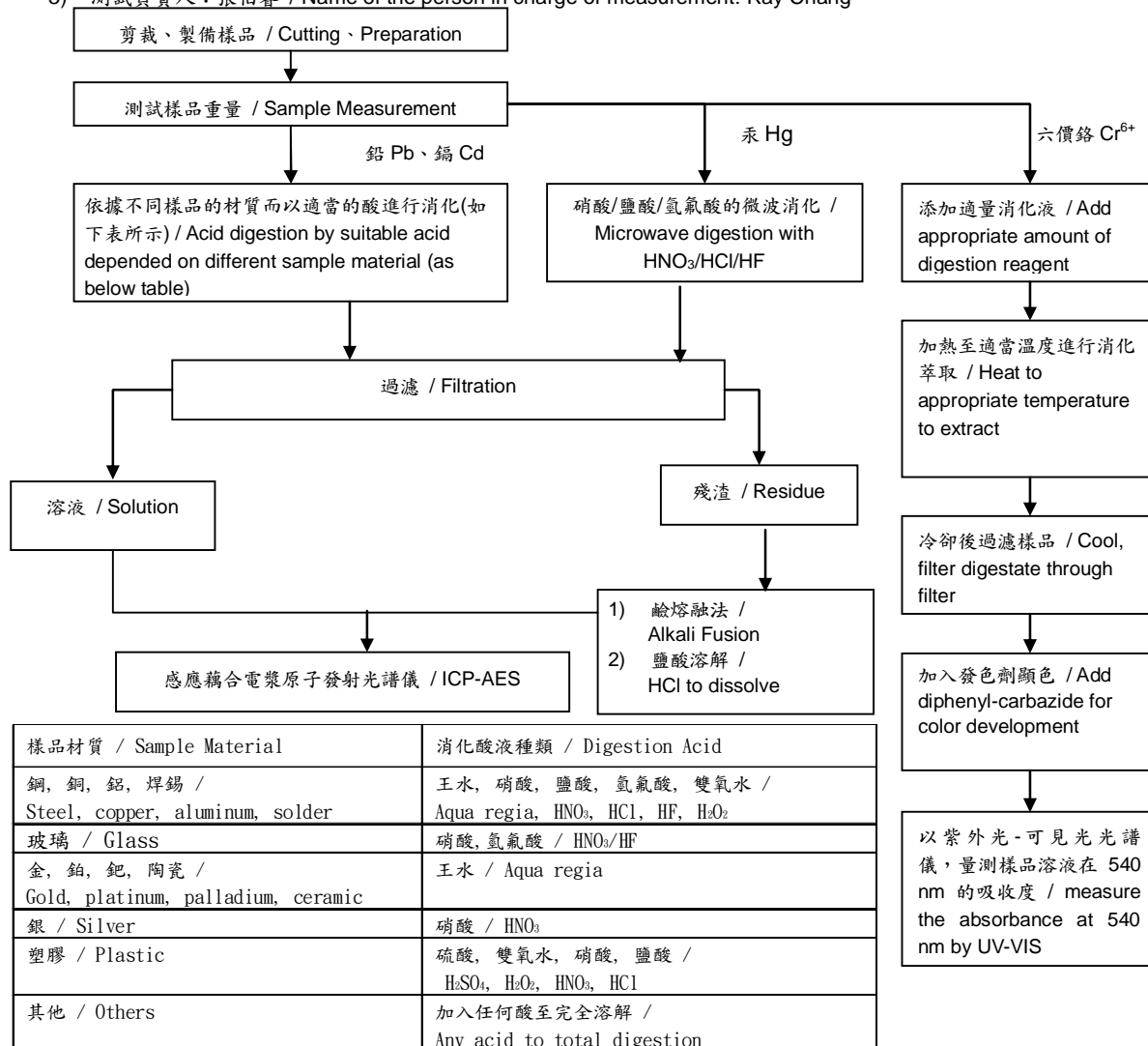
長春人造樹脂股份有限公司

CHANG CHUN PLASTICS CO., LTD.

高雄市大寮區大發工業區華西路8號

NO.8, HUASI RD., DALIAO DIST., KAOSIUNG CITY 831, TAIWAN(R.O.C.)

- 1) 根據以下的流程圖之條件，樣品已完全溶解。(六價鉻測試方法除外) / These samples were dissolved totally by pre-conditioning method according to below flow chart. (Cr⁶⁺ test method excluded)
- 2) 測試人員：張俊雄 / Name of the person who made measurement: Alex Chang
- 3) 測試負責人：張伯睿 / Name of the person in charge of measurement: Ray Chang



Unless otherwise stated the results shown in this test report refer only to the sample(s) tested. This test report cannot be reproduced, except in full, without prior written permission of the Company. 除非另有說明，此報告結果僅對測試之樣品負責。本報告未經本公司書面許可，不可部分複製。
This document is issued by the Company subject to its General Conditions of Service printed overleaf, available on request or accessible at www.sgs.com/terms_and_conditions.htm and, for electronic format documents, subject to Terms and Conditions for Electronic Documents at www.sgs.com/terms_e-document.htm. Attention is drawn to the limitation of liability, indemnification and jurisdiction issues defined therein. Any holder of this document is advised that information contained hereon reflects the Company's findings at the time of its intervention only and within the limits of Client's instructions, if any. The Company's sole responsibility is to its Client and this document does not exonerate parties to a transaction from exercising all their rights and obligations under the transaction documents. This document cannot be reproduced except in full, without prior written approval of the Company. Any unauthorized alteration, forgery or falsification of the content or appearance of this document is unlawful and offenders may be prosecuted to the fullest extent of the law.

長春人造樹脂廠股份有限公司

CHANG CHUN PLASTICS CO., LTD.

高雄市大寮區大發工業區華西路8號

NO.8, HUASI RD., DALIAO DIST., KAOSIUNG CITY 831, TAIWAN(R.O.C.)

多溴聯苯/多溴聯苯醚 分析流程圖 / PBB/PBDE analytical FLOW CHART

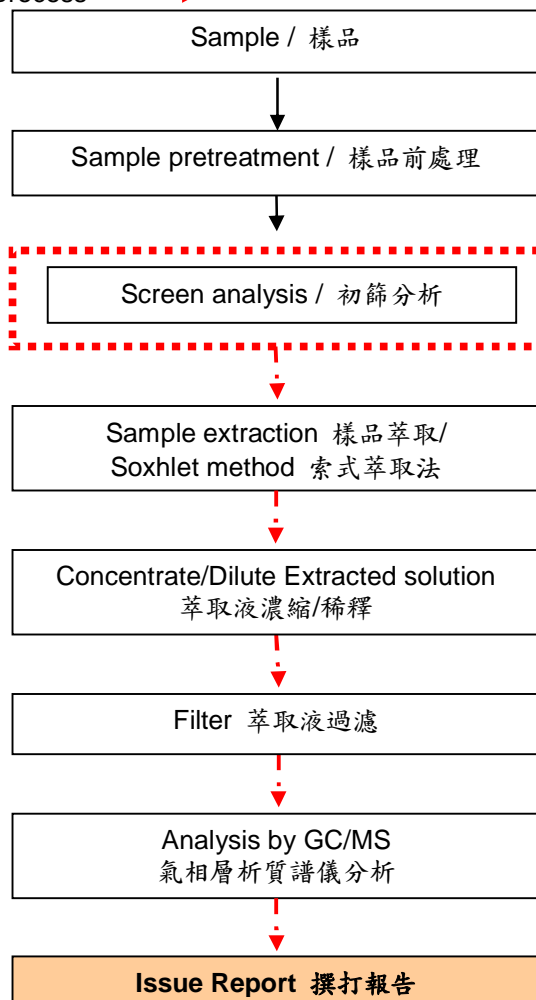
1)測試人員：曹嘉琪 / Name of the person who made measurement: Anson Tsao

2)測試負責人：張伯睿 / Name of the person in charge of measurement: Ray Chang

初次測試程序 / First testing process ———→

選擇性篩檢程序 / Optional screen process→

確認程序 / Confirmation process - - - ->



Unless otherwise stated the results shown in this test report refer only to the sample(s) tested. This test report cannot be reproduced, except in full, without prior written permission of the Company. 除非另有說明，此報告結果僅對測試之樣品負責。本報告未經本公司書面許可，不可部分複製。
This document is issued by the Company subject to its General Conditions of Service printed overleaf, available on request or accessible at www.sgs.com/terms_and_conditions.htm and, for electronic format documents, subject to Terms and Conditions for Electronic Documents at www.sgs.com/terms_e-document.htm. Attention is drawn to the limitation of liability, indemnification and jurisdiction issues defined therein. Any holder of this document is advised that information contained hereon reflects the Company's findings at the time of its intervention only and within the limits of Client's instructions, if any. The Company's sole responsibility is to its Client and this document does not exonerate parties to a transaction from exercising all their rights and obligations under the transaction documents. This document cannot be reproduced except in full, without prior written approval of the Company. Any unauthorized alteration, forgery or falsification of the content or appearance of this document is unlawful and offenders may be prosecuted to the fullest extent of the law.

長春人造樹脂廠股份有限公司

CHANG CHUN PLASTICS CO., LTD.

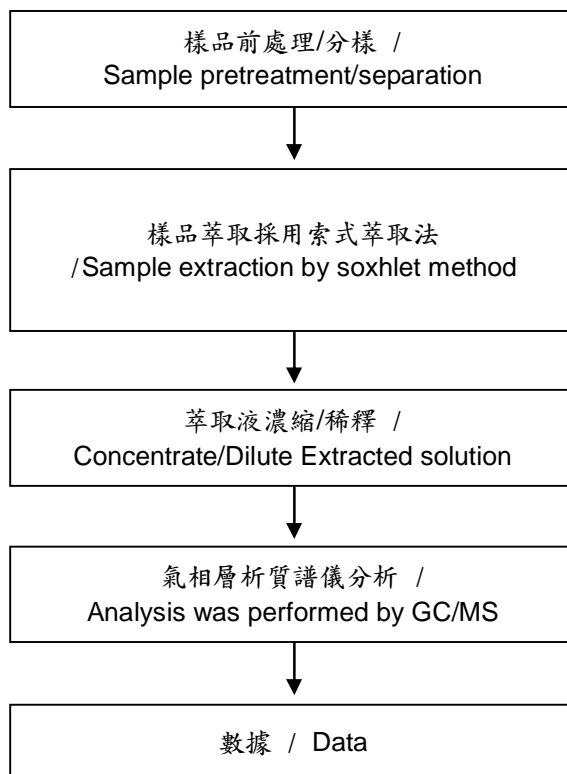
高雄市大寮區大發工業區華西路8號

NO.8, HUASI RD., DALIAO DIST., KAOSIUNG CITY 831, TAIWAN(R.O.C.)

可塑劑分析流程圖 / Analytical flow chart of phthalate content

1)測試人員：曹嘉琪 / Name of the person who made measurement: Anson Tsao

2)測試負責人：張伯睿 / Name of the person in charge of measurement: Ray Chang



Unless otherwise stated the results shown in this test report refer only to the sample(s) tested. This test report cannot be reproduced, except in full, without prior written permission of the Company. 除非另有說明，此報告結果僅對測試之樣品負責。本報告未經本公司書面許可，不可部分複製。
This document is issued by the Company subject to its General Conditions of Service printed overleaf, available on request or accessible at www.sgs.com/terms_and_conditions.htm and, for electronic format documents, subject to Terms and Conditions for Electronic Documents at www.sgs.com/terms_e-document.htm. Attention is drawn to the limitation of liability, indemnification and jurisdiction issues defined therein. Any holder of this document is advised that information contained hereon reflects the Company's findings at the time of its intervention only and within the limits of Client's instructions, if any. The Company's sole responsibility is to its Client and this document does not exonerate parties to a transaction from exercising all their rights and obligations under the transaction documents. This document cannot be reproduced except in full, without prior written approval of the Company. Any unauthorized alteration, forgery or falsification of the content or appearance of this document is unlawful and offenders may be prosecuted to the fullest extent of the law.

長春人造樹脂廠股份有限公司

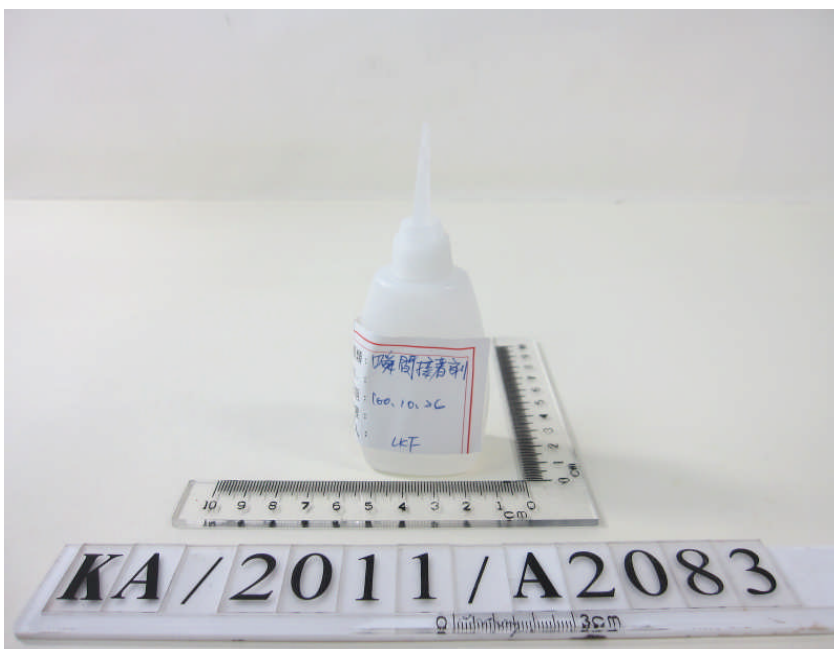
CHANG CHUN PLASTICS CO., LTD.

高雄市大寮區大發工業區華西路8號

NO.8, HUASI RD., DALIAO DIST., KAOSIUNG CITY 831, TAIWAN(R.O.C.)

* 照片中如有箭頭標示，則表示為實際檢測之樣品/部位。*

(The tested sample / part is marked by an arrow if it's shown on the photo.)



** 報告結尾(End of Report) **

Unless otherwise stated the results shown in this test report refer only to the sample(s) tested. This test report cannot be reproduced, except in full, without prior written permission of the Company. 除非另有說明，此報告結果僅對測試之樣品負責。本報告未經本公司書面許可，不可部分複製。
This document is issued by the Company subject to its General Conditions of Service printed overleaf, available on request or accessible at www.sgs.com/terms_and_conditions.htm and, for electronic format documents, subject to Terms and Conditions for Electronic Documents at www.sgs.com/terms_e-document.htm. Attention is drawn to the limitation of liability, indemnification and jurisdiction issues defined therein. Any holder of this document is advised that information contained hereon reflects the Company's findings at the time of its intervention only and within the limits of Client's instructions, if any. The Company's sole responsibility is to its Client and this document does not exonerate parties to a transaction from exercising all their rights and obligations under the transaction documents. This document cannot be reproduced except in full, without prior written approval of the Company. Any unauthorized alteration, forgery or falsification of the content or appearance of this document is unlawful and offenders may be prosecuted to the fullest extent of the law.